

What To Do if you are worried a child is being abused

CM Integrated Care Board: West Place

Safeguarding Children Flow Chart for Referral

Children's Social Care

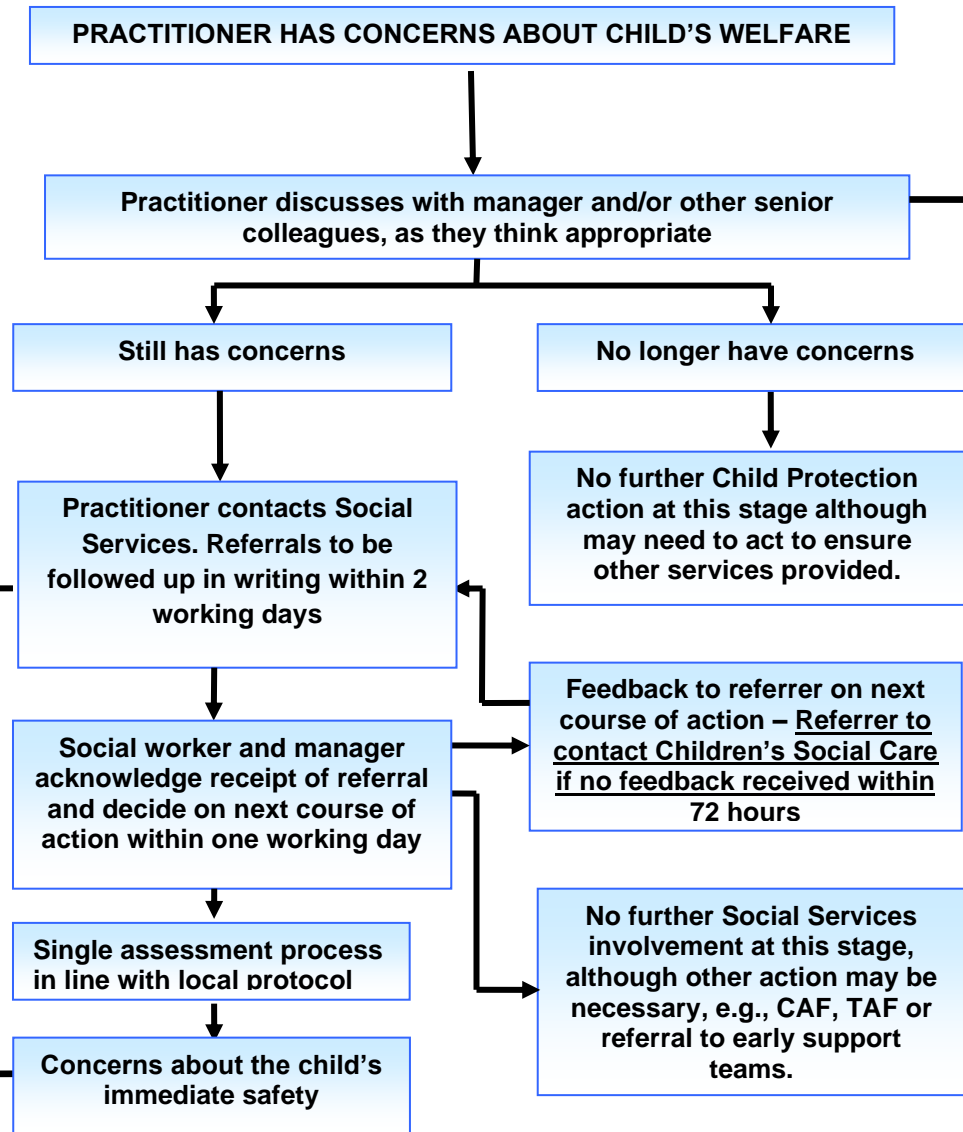
Cheshire West & Chester Integrated Access and Referral Team (i-ART)
Tel: 0300 123 7047 (opt 1)

**Emergency Duty Teams
[Out of Hours]**

Cheshire West and Chester
Tel: 01244 977277

**Cheshire Police Tel: 101 (Free)
Public Protection Department**

In an emergency dial 999



For Advice Prior to Referral

Designated Nurses Safeguarding

Sue Pilkington: 07584 333897
sue.pilkington@nhs.net

Deputy Designated Safeguarding and Looked After Children Nurse
Rebecca Jones
07464 645835 - r.jones59@nhs.net

Named GPs

Dr Sue O'Dell - Wednesday
07584 266012 - s.o'dell@nhs.net

Dr Rosie Goodwin
Wednesday, Thursday & Friday
07887 816802 - rosie.goodwin@nhs.net

For all above out of office please e-mail
cheshireccg.safeguardadmin@nhs.net